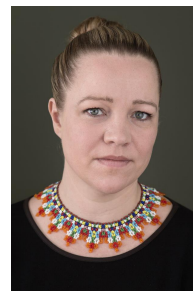


CURRICULUM VITAE: DR. ANNE MERRILD HANSEN

The PhD School, Ilisimatusarfik, University of Greenland
Manutooq 1, 3905 Nuussuaq
Email: merrild@plan.aau.dk
Mobile: +45 25373915



[Wikipedia](#)
[Twitter profile](#)
[LinkedIn profile](#)
[AAU profile with a log of professional activities](#)

AREAS OF PROFESSIONAL INTEREST

PhD education; Social Impact Assessment; Strategic Environmental Impact Assessment; Planning Theory; Extractive Industries; Communities; Development; Risk; Impact Benefit Agreements; Conflict and resolution.

EDUCATION

2011 PhD, Strategic Environmental Assessment, Aalborg University
2002 M.Sc. Engineering, Planning, Aalborg University

ACADEMIC AND PROFESSIONAL POSITIONS

2016- Professor of Social Science, Ilisimatusarfik, University of Greenland
2016- 2022 Head of PhD School, Ilisimatusarfik, University of Greenland
2018- Professor, Planning and Impact Assessment in the Arctic, Aalborg University
2016- 2022 Head of AAU Arctic, Aalborg University
2016- 2018 Director of the Arctic Oil and Gas Research Centre, Nuuk, Greenland
2012- 2018 Associate Professor, Aalborg University
2011- 2013 Greenland Environmental Advisor, Maersk Oil
2011- 2012 Postdoc, Aalborg University
2008- 2011 PhD Fellow, Aalborg University
2005- 2008 Head of Business and Labour Dep. Municipality of South Greenland
2002- 2005 Planner at the Technical Dep. Municipality of South Greenland

HONOURS AND AWARDS

2015-2016 Fulbright Arctic Initiative Grant, Awarded by US Department of State and the Fulbright Commission during the US Arctic Chairmanship in Arctic Council

PROFESSIONAL AND ASSOCIATE OFFICES AND COMMITTEE ACTIVITY (SELECTED)

- Member of Network Programme Committee (NPU), appointed by the Danish Ministry of Research and Education (2019-present)
- Member of [Knowledge Network on Mining Encounters and Indigenous Sustainable Livelihoods: Cross-Perspectives from the Circumpolar North and Melanesia/Australia \(MinErAL\)](#)
- Member of organising team, Greenland Science Week (2019 & 2020)
- Head of organising team, Polar Research Day in Denmark (2018)
- Member of Greenland Research Council (2016-2017)
- Head of organising team, Nordic Research Forum, Reykjavik Iceland (2017)
- Member of BBDS Team on Adaptation Actions for a Changing Arctic, AMAP, Arctic Council (2014-2018)
- Member of EUPolarNet whitepaper working group on sustainable resource management in Arctic (2017)
- Member of The Committee for Greenlandic Mineral Resources to the Benefit of Society (2013-2014)

RESEARCH AND CONTRACT INFORMATION (SELECTED)

- Work Package leader and PI at Aalborg University, Horizon 2020 project, AISiCal, 2019-2023
- Partner and PI at Aalborg University, Horizon 2020 project, Tipping+, 2020-2024
- Project lead, [Guidance Note](#) on Indigenous and Local Community: Participation in Environmental Impact Assessment in the European Arctic, on behalf of European Investment Bank 2018-2019.
- Project lead: Benchmarking environmental assessment legislation related to offshore oil activities in Arctic, Funded by DANCEA, 2014-2016.
- Project lead and coordinator of corporate collaboration project: Social Baseline Study in Baffin Bay, Greenland, on behalf of the operating oil companies, Maersk Oil, ConocoPhillips, Shell and Cairn Energy, 2012-2013.

PUBLICATIONS (SELECTED)

Peer reviewed scientific papers in international journals

1. Egede, P. P., & Hansen, A. M. (2019). Does Indigenous Knowledge occur and influence impact assessment reports? Exploring hearing responses in three cases of mining projects in Greenland. *Arctic Review on Law and Politics*, 10, 165-189.
2. Hansen, A. M., & Johnstone, R. L. (2019). In the Shadow of the Mountain: Assessing early impacts on community development from two mining prospects in South Greenland. *The Extractive Industries and Society*, 6(2), 480-488.
3. Hansen, A. M., & Virginia, R. A. (2018). The future of hydrocarbon development in Greenland: Perspectives from residents of the north slope of Alaska. *Arctic*, 71(4), 365-374.
4. Dale, B., Veland, S., & Hansen, A. M. (2018). Petroleum as a challenge to arctic societies: Ontological security and the oil-driven 'push to the north'. *Extractive Industries and Society*.
5. Kirkfeldt, T. S., Hansen, A. M., Olsen, P., Mortensen, L., Krumova, K., & Welsch, A. (2017). Why cumulative impacts assessments of hydrocarbon activities in the Arctic fail to meet their purpose. *Regional Environmental Change*, 17(3), 725-737.
6. Mortensen, L., Hansen, A. M., & Shestakov, A. (2017). How three key factors are driving and challenging implementation of renewable energy systems in remote Arctic communities. *Polar Geography*, 40(3), 163-185.
7. Larsen, S. V., Hansen, A. M., & Nielsen, H. (2018). The role of EIA and weak assessments of social impacts in conflicts over implementation of renewable energy policies. *Energy Policy*, 115, 43-53.
8. Hansen, A. M., Vanclay, F., Croal, P., & Skjervedal, A-S. H. (2016). Managing the social impacts of the rapidly expanding extractive industries in Greenland. *The Extractive Industries and Society*, 3(1), 25-33.
9. Hansen, A. M., & Tejsner, P. (2016). Identifying challenges and opportunities for residents in Upernavik as oil companies are making a first entrance into Baffin Bay. *Arctic Anthropology*, 53(1), 84-94.
10. Olsen, A-S. H., & Hansen, A. M. (2014). Perceptions of public participation in impact assessment: A study of offshore oil exploration in Greenland. *Impact Assessment and Project Appraisal*, 32(1), 72-80.

Academic Books

1. Johnstone, R. L. (ed.) & Hansen, A. M. (ed.) (In press 2020). Regulation of Extractive Industries: Community Engagement in the Arctic. Routledge.
2. Hansen, A. M. (ed.), Ren, C. (ed.), (In press 2020). Collaborative Methods in Arctic Research: Experiences from Greenland. Routledge.

Chapters in Academic Books and Reports

1. Hansen, A. M., Larsen, S. V., & Noble, B. (2018). Social and Environmental Impact Assessments in the Arctic. M. Nuttall, T. Christensen, & M. Siegert (red.), *The Routledge Handbook of the Polar Regions* NEW YORK: Routledge. Routledge International Handbooks
2. Hansen, A. M., Ingebrigtsen, L., Edmunds-potvin, S., Mulvad, G., Weiler, H., Ford, J., Healey, G. (2017). Chapter 4. Health and well-being. *Adaptation Action for a Changing Arctic: BAFFIN BAY/DAVIS STRAIT REGIONAL REPORT*

3. Wilson, E., **Hansen, A. M.**, & Rowe, E. W. (2017). Imagining the future: local perceptions of Arctic extractive projects that didn't happen. I. Kelman, & R. C. ten Veen (red.), *Arcticness and change: Power and voice from the north* (Chapter 12, 130-149). London: UCL Press.
4. **Hansen, A. M.**, Tejsner, P., & Egede, P. P. (2016). Traditional Knowledge and Industrial Development: On the potential use of indigenous and local knowledge as a resource to assess competencies in Greenland. R. Knudsen, & M. Jacobsen (red.), *Perspectives On Skills* (Kapitel 7.1, s. 152-166). Greenland Perspective.

PHD SUPERVISION (MAIN SUPERVISOR)

- Anna Sofie Skjervedal, *Public Participation in Environment and Social Impact Assessment - Exploring the human dimension of oil exploration in Greenland*. Successful defence: August 2018.
- Morten Bidstrup, *Towards meaningful Strategic Environmental Assessment*. Successful defence: May 2016.
- Klaus Georg Hansen, *Fra passiv iagttager til aktiv deltager. Forskellige diskursers, styreformers og legitimiteters betydning for den gradvist øgede demokratisering i Grønland gennem 150 år*. Successful defence: January 2016.
- Parnuna Egede, *Environmental Impact Assessment of Resource Development Projects in the Arctic - and the application of Traditional Knowledge*. Planned defence in 2020.
- Naja Carina Steenholdt, *Perspectives on quality of life in Greenland, where are we heading?* Planned defence in 2020.

MEMBER OF PHD ASSESSMENT COMMITTEE

- 2019, The social license to operate of oil and gas development in Greenland, PhD by Coco C. A. Smits, Arctic Center, Wageningen University.
- 2019, Hepatitis among Greenlanders in Denmark and in Greenland, and the outcome of chronic HBV-infection in Greenland, PhD by Karsten Fleischer Rex, Aalborg University. (Chair)
- 2016, Agenda-setting the unknown: a study of climate change adaptation governance at the local and regional level in Norway, PhD by Halvor Dannevig, Western Norway research institute for Vestlandsforskning and Aalborg University. (Chair)
- 2015, Power and Participation in Greenlandic Fisheries Governance, the becoming of problems, selves and others in the everyday politics of meaning, PhD by Rikke Becker Jakobsen, Aalborg University. (Chair)
- 2013, The Role of Indicators in Strategic Environmental Assessment – experience from Chinese practise. PhD by Jingjing Gao, Aalborg University. (Chair)